

UNIDRALL® BUS 1010F

Cavo per posa fissa (INTERBUS Remote Bus, 2-wire)
 INTERBUS cable for fixed installation



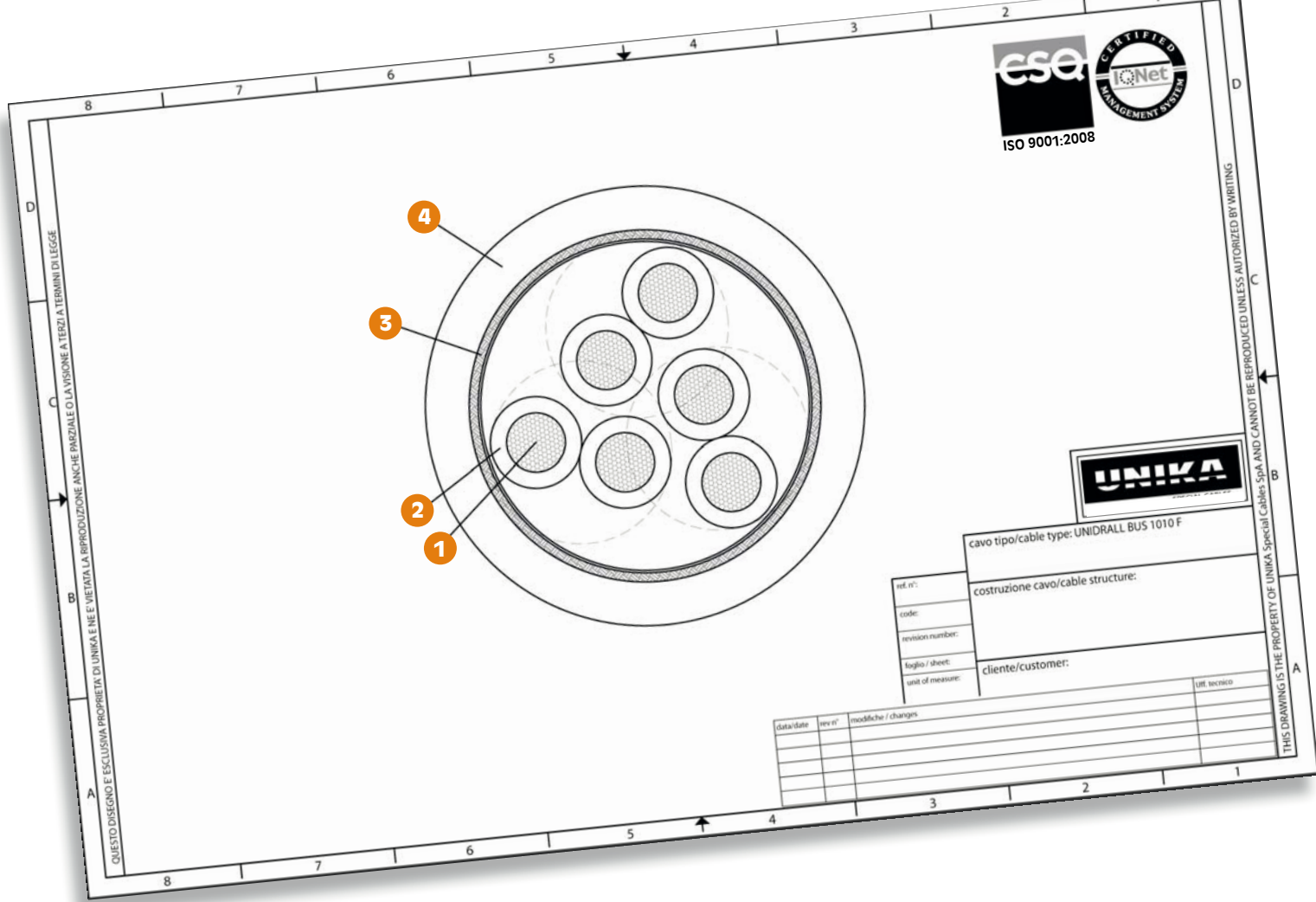
	Dati tecnici	Technical data
Conduttore Conductor	1 Rame rosso secondo CEI EN 60228 (CEI 20-29) classe 5	Bare copper complying with CEI EN 60228 (CEI 20-29) class 5
Isolamento ed identificazione anime Insulation and core identification	2 Poliolfina. Anime colorate secondo DIN 47100	Polyolefin. Core colours according to DIN 47100
Schermatura totale Overall shielding	3 Nastro di alluminio/poliestere e treccia di fili di rame rosso avente copertura maggiore 85%	Aluminium/polyester tape with bare copper wire braid having coverage above 85%
Guaina Jacket	4 PVC classe 43 secondo UL 1581. Colore verde RAL 6017	PVC class 43 according to UL1581. Colour green RAL 6017
Tensione di lavoro Operating voltage	30 V	30 V
Tensione di prova Test voltage	1000 V	1000 V
Resistenza di isolamento Insulation resistance	> 200 MΩ·km	> 200 MΩ·km
Temperatura di lavoro Operating temperature	Posa fissa -30 ÷ 80 °C	Fixed application -30 ÷ 80 °C
	Posa dinamica in catena -5 ÷ 80 °C	Dynamic application into chain -5 ÷ 80 °C
Raggio minimo di curvatura Minimum bending radius	Posa fissa 6 x diametro esterno	Fixed application 6 x outer diameter
	Posa flessibile 12 x diametro esterno	Flexible installation 12 x outer diameter
Comportamento al fuoco Fire behaviour	Prova di non propagazione fiamma UL 758 e prova FT-1 CSA C.22.2 n°210	Cable flame test per UL 758 and FT-1 test per CSA C.22.2 n°210
Emissione gas alogenidrici Halogen gas emission	≤ 18% IEC 60754, CEI EN 50267-2	≤ 18% IEC 60754, CEI EN 50267-2
Resistenza agli oli industriali Industrial oil resistance	IEC CEI EN 60811-2-1	IEC CEI EN 60811-2-1
Resistenza all'acqua Water resistance	IEC CEI EN 60811-1-3	IEC CEI EN 60811-1-3
Resistenza elettrica Electrical resistance	≤ 96 Ω/km	≤ 96 Ω/km
Capacità mutua a 1 kHz Mutual capacitance at 1 kHz	≤ 60 pF/m	≤ 60 pF/m
Impedenza caratteristica Characteristic impedance	120 ± 24 Ω f=64 kHz	120 ± 24 Ω f=64 kHz
	100 ± 15 Ω f>1 MHz	100 ± 15 Ω f>1 MHz

Il cavo INTERBUS per posa fissa con guaina in PVC è impiegato in sistemi di connessione dove richiesto lo standard EIA RS 485.

Approvato UL/CSA:
 80°C 1000V style 21179

INTERBUS cable for fix installation and with PVC outerjacket is employed on connection systems that requires EIA RS 485 standard.

UL and CSA approvals:
 80°C 1000V style 21179



codice code	formazione assembly	diametro esterno outer diameter [mm]	massa Cu [Kg/km]	massa cavo cable mass [Kg/km]
B2162	3x2x0,22	7,30	27	65,7

	Dati tecnici	Technical data																																								
Attenuazione Attenuation	<table border="1"> <thead> <tr> <th>Frequenza [MHz]</th> <th>Attenuazione massima [dB/km]</th> </tr> </thead> <tbody> <tr><td>0,256</td><td>1,5</td></tr> <tr><td>0,772</td><td>1,5</td></tr> <tr><td>1</td><td>2,4</td></tr> <tr><td>4</td><td>2,7</td></tr> <tr><td>10</td><td>5,2</td></tr> <tr><td>16</td><td>8,4</td></tr> <tr><td>20</td><td>11,2</td></tr> <tr><td></td><td>11,9</td></tr> </tbody> </table>	Frequenza [MHz]	Attenuazione massima [dB/km]	0,256	1,5	0,772	1,5	1	2,4	4	2,7	10	5,2	16	8,4	20	11,2		11,9	<table border="1"> <thead> <tr> <th>Frequency</th> <th>Maximum attenuation [dB/km]</th> </tr> </thead> <tbody> <tr><td>0,256</td><td>1,5</td></tr> <tr><td>0,772</td><td>1,5</td></tr> <tr><td>1</td><td>2,4</td></tr> <tr><td>4</td><td>2,7</td></tr> <tr><td>10</td><td>5,2</td></tr> <tr><td>16</td><td>8,4</td></tr> <tr><td>20</td><td>11,2</td></tr> <tr><td></td><td>11,9</td></tr> </tbody> </table>	Frequency	Maximum attenuation [dB/km]	0,256	1,5	0,772	1,5	1	2,4	4	2,7	10	5,2	16	8,4	20	11,2		11,9				
Frequenza [MHz]	Attenuazione massima [dB/km]																																									
0,256	1,5																																									
0,772	1,5																																									
1	2,4																																									
4	2,7																																									
10	5,2																																									
16	8,4																																									
20	11,2																																									
	11,9																																									
Frequency	Maximum attenuation [dB/km]																																									
0,256	1,5																																									
0,772	1,5																																									
1	2,4																																									
4	2,7																																									
10	5,2																																									
16	8,4																																									
20	11,2																																									
	11,9																																									
Minima attenuazione di diafonia Minimum near-end crosstalk attenuation	<table border="1"> <thead> <tr> <th>Frequenza [MHz]</th> <th>Attenuazione massima [dB/km]</th> </tr> </thead> <tbody> <tr><td>0,256</td><td>61</td></tr> <tr><td>0,772</td><td>59</td></tr> <tr><td>1</td><td>59</td></tr> <tr><td>4</td><td>55</td></tr> <tr><td>10</td><td>50</td></tr> <tr><td>16</td><td>46</td></tr> <tr><td>20</td><td>44</td></tr> <tr><td></td><td>41</td></tr> <tr><td></td><td>40</td></tr> </tbody> </table>	Frequenza [MHz]	Attenuazione massima [dB/km]	0,256	61	0,772	59	1	59	4	55	10	50	16	46	20	44		41		40	<table border="1"> <thead> <tr> <th>Frequency [MHz]</th> <th>Maximum attenuation [dB/km]</th> </tr> </thead> <tbody> <tr><td>0,256</td><td>61</td></tr> <tr><td>0,772</td><td>59</td></tr> <tr><td>1</td><td>59</td></tr> <tr><td>4</td><td>55</td></tr> <tr><td>10</td><td>50</td></tr> <tr><td>16</td><td>46</td></tr> <tr><td>20</td><td>44</td></tr> <tr><td></td><td>41</td></tr> <tr><td></td><td>40</td></tr> </tbody> </table>	Frequency [MHz]	Maximum attenuation [dB/km]	0,256	61	0,772	59	1	59	4	55	10	50	16	46	20	44		41		40
Frequenza [MHz]	Attenuazione massima [dB/km]																																									
0,256	61																																									
0,772	59																																									
1	59																																									
4	55																																									
10	50																																									
16	46																																									
20	44																																									
	41																																									
	40																																									
Frequency [MHz]	Maximum attenuation [dB/km]																																									
0,256	61																																									
0,772	59																																									
1	59																																									
4	55																																									
10	50																																									
16	46																																									
20	44																																									
	41																																									
	40																																									
Impedenza di trasferimento Transfer impedance	≤ 250 mΩ/m f=30 MHz	≤ 250 mΩ/m f=30 MHz																																								
Massima lunghezza di trasmissione per tratta Maximum length for each segment	400 m at 500 kBit/s	400 m at 500 kBit/s																																								