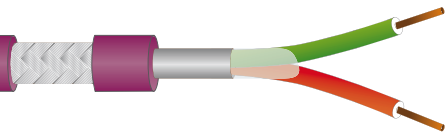


UNIDRALL[®] BUS 1000

Cavo PROFIBUS per posa flessibile
PROFIBUS cable for flexible installation

UNIKA UNIDRALL BUS 1000 cULus AWM style 21179 80°C 1000V FT-1 CE



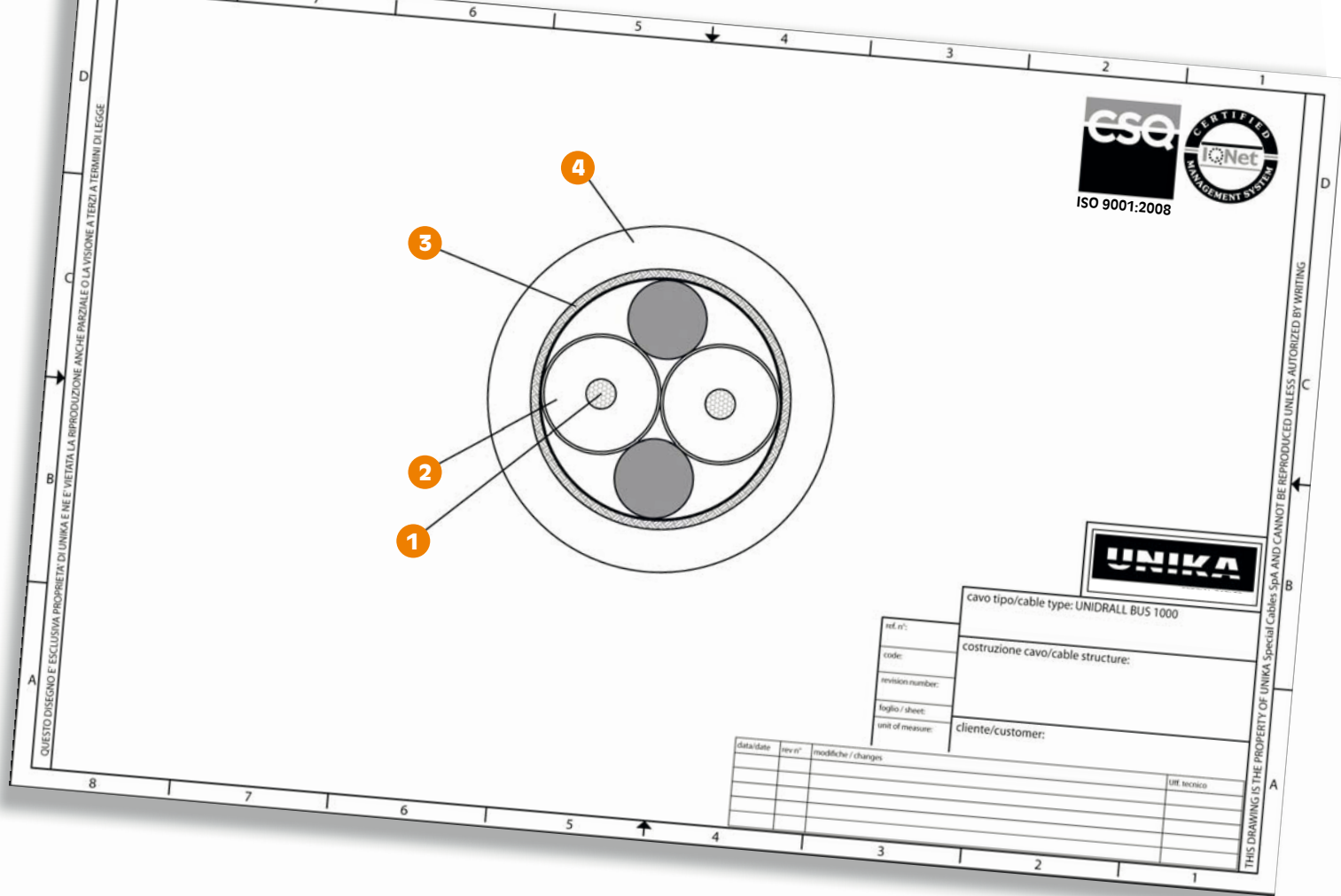
	Dati tecnici	Technical data
Conduttore Conductor	1 Rame rosso secondo CEI EN 60228 (CEI 20-29) classe 5	Bare copper complying with CEI EN 60228 (CEI 20-29) class 5
Isolamento ed identificazione anime Insulation and core identification	2 PE espanso con skin in HDPE. Anime colorate verde e rosso	Foam PE with HDPE skin. Core colours: green and red
Schermatura totale Overall shielding	3 Nastro di alluminio/poliestere e treccia di fili di rame stagnato avente copertura maggiore 60%.	Aluminium/polyester tape with tinned copper wire braid having coverage above 60%.
Guaina Jacket	4 PVC classe 43 secondo UL 1581. Colore viola RAL 4001	PVC class 43 according to UL1581. Colour violet RAL 4001
Tensione di lavoro Operating voltage	30 V	30 V
Tensione di prova Test voltage	1000 V	1000 V
Resistenza di isolamento Insulation resistance	> 200 MΩ·km	> 200 MΩ·km
Temperatura di lavoro Operating temperature	Posa fissa -30 ÷ 80 °C	Fixed installation -30 ÷ 80 °C
	Posa flessibile -5 ÷ 80 °C	Flexible installation -30 ÷ 80 °C
Raggio minimo di curvatura Minimum bending radius	Posa fissa 5 x diametro esterno	Fixed installation 5 x outer diameter
	Posa flessibile ed in catena 10 x diametro esterno	Flexible installation and into chain 10 x outer diameter
Comportamento al fuoco Fire behaviour	Prova di non propagazione fiamma UL 758 e prova FT-1 CSA C.22.2 n°210	Cable flame test per UL 758 and FT-1 test per CSA C.22.2 n°210
Emissione gas alogenidrici Halogen gas emission	≤ 18% IEC 60754, CEI EN 50267-2	≤ 18% IEC 60754, CEI EN 50267-2
Resistenza agli oli industriali Industrial oil resistance	IEC CEI EN 60811-2-1	IEC CEI EN 60811-2-1
Assorbimento d'acqua Water absorption	IEC CEI EN 60811-1-3	IEC CEI EN 60811-1-3
Resistenza elettrica Electrical resistance	≤ 57,5 Ω/km	≤ 57,5 Ω/km
Capacità mutua a 1 kHz Mutual capacitance at 1 kHz	≤ 30 pF/m	≤ 30 pF/m
Velocità Speed	150 m/min	150 m/min
Accelerazione/decelerazione Acceleration/deceleration	5 m/s ²	5 m/s ²

Il cavo PROFIBUS DP per posa fissa e dinamica (non continua), è riconosciuto dalle normative Europee EN 50170 ed internazionali IEC 61158-61784. Il cavo è impiegato su sistemi di connessione per reti di comunicazione seriale tipo RS 485.

Approvato DESINA.
Approvato UL/CSA:
80°C 1000V style 21179

PROFIBUS DF cable for both fixed and dynamic installation (not continuous), is recognized by European regulations EN 50170 and international IEC 61158-61784. The cable is apt to be installed on RS 485 connection systems.

DESINA Approved.
UL and CSA approvals:
80°C 1000V style 21179



codice code	formazione assembly	diametro esterno outer diameter (mm)	massa Cu mass [Kg/km]	massa cavo cable mass [Kg/km]
B1223	1x2x0,64mm	Max 8,0	25	79,0

Dati tecnici		Technical data																									
Impedenza caratteristica Characteristic impedance	150 ± 15 Ω	150 ± 15 Ω																									
Attenuazione Attenuation	<table border="1"> <thead> <tr> <th>Frequenza [MHz]</th> <th>Attenuazione massima [dB/km]</th> </tr> </thead> <tbody> <tr><td>0,25</td><td>6</td></tr> <tr><td>0,625</td><td>9</td></tr> <tr><td>1,25</td><td>12</td></tr> <tr><td>3,125</td><td>18</td></tr> <tr><td>16</td><td>40</td></tr> </tbody> </table>	Frequenza [MHz]	Attenuazione massima [dB/km]	0,25	6	0,625	9	1,25	12	3,125	18	16	40	<table border="1"> <thead> <tr> <th>Frequency [MHz]</th> <th>Maximum attenuation [dB/km]</th> </tr> </thead> <tbody> <tr><td>0,25</td><td>6</td></tr> <tr><td>0,625</td><td>9</td></tr> <tr><td>1,25</td><td>14</td></tr> <tr><td>3,125</td><td>23</td></tr> <tr><td>16</td><td>47</td></tr> </tbody> </table>	Frequency [MHz]	Maximum attenuation [dB/km]	0,25	6	0,625	9	1,25	14	3,125	23	16	47	
Frequenza [MHz]	Attenuazione massima [dB/km]																										
0,25	6																										
0,625	9																										
1,25	12																										
3,125	18																										
16	40																										
Frequency [MHz]	Maximum attenuation [dB/km]																										
0,25	6																										
0,625	9																										
1,25	14																										
3,125	23																										
16	47																										
Sbilancio capacitivo verso terra Capacitance earth unbalance	≤ 1500 pF/m	≤ 1500 pF/m																									
Massima lunghezza di trasmissione per tratta Maximum length for each segment	<table border="1"> <thead> <tr> <th>Transmission rate [kbit/s]</th> <th>Lunghezza [m]</th> </tr> </thead> <tbody> <tr><td>≤ 93,75</td><td>1200</td></tr> <tr><td>≤ 187,5</td><td>1000</td></tr> <tr><td>≤ 500</td><td>400</td></tr> <tr><td>≤ 1500</td><td>200</td></tr> <tr><td>≤ 12000</td><td>100</td></tr> </tbody> </table>	Transmission rate [kbit/s]	Lunghezza [m]	≤ 93,75	1200	≤ 187,5	1000	≤ 500	400	≤ 1500	200	≤ 12000	100	<table border="1"> <thead> <tr> <th>Transmission rate [kbit/s]</th> <th>Length [m]</th> </tr> </thead> <tbody> <tr><td>≤ 93,75</td><td>1200</td></tr> <tr><td>≤ 187,5</td><td>1000</td></tr> <tr><td>≤ 500</td><td>400</td></tr> <tr><td>≤ 1500</td><td>200</td></tr> <tr><td>≤ 12000</td><td>100</td></tr> </tbody> </table>	Transmission rate [kbit/s]	Length [m]	≤ 93,75	1200	≤ 187,5	1000	≤ 500	400	≤ 1500	200	≤ 12000	100	
Transmission rate [kbit/s]	Lunghezza [m]																										
≤ 93,75	1200																										
≤ 187,5	1000																										
≤ 500	400																										
≤ 1500	200																										
≤ 12000	100																										
Transmission rate [kbit/s]	Length [m]																										
≤ 93,75	1200																										
≤ 187,5	1000																										
≤ 500	400																										
≤ 1500	200																										
≤ 12000	100																										