

# UNIATOX<sup>®</sup> 800

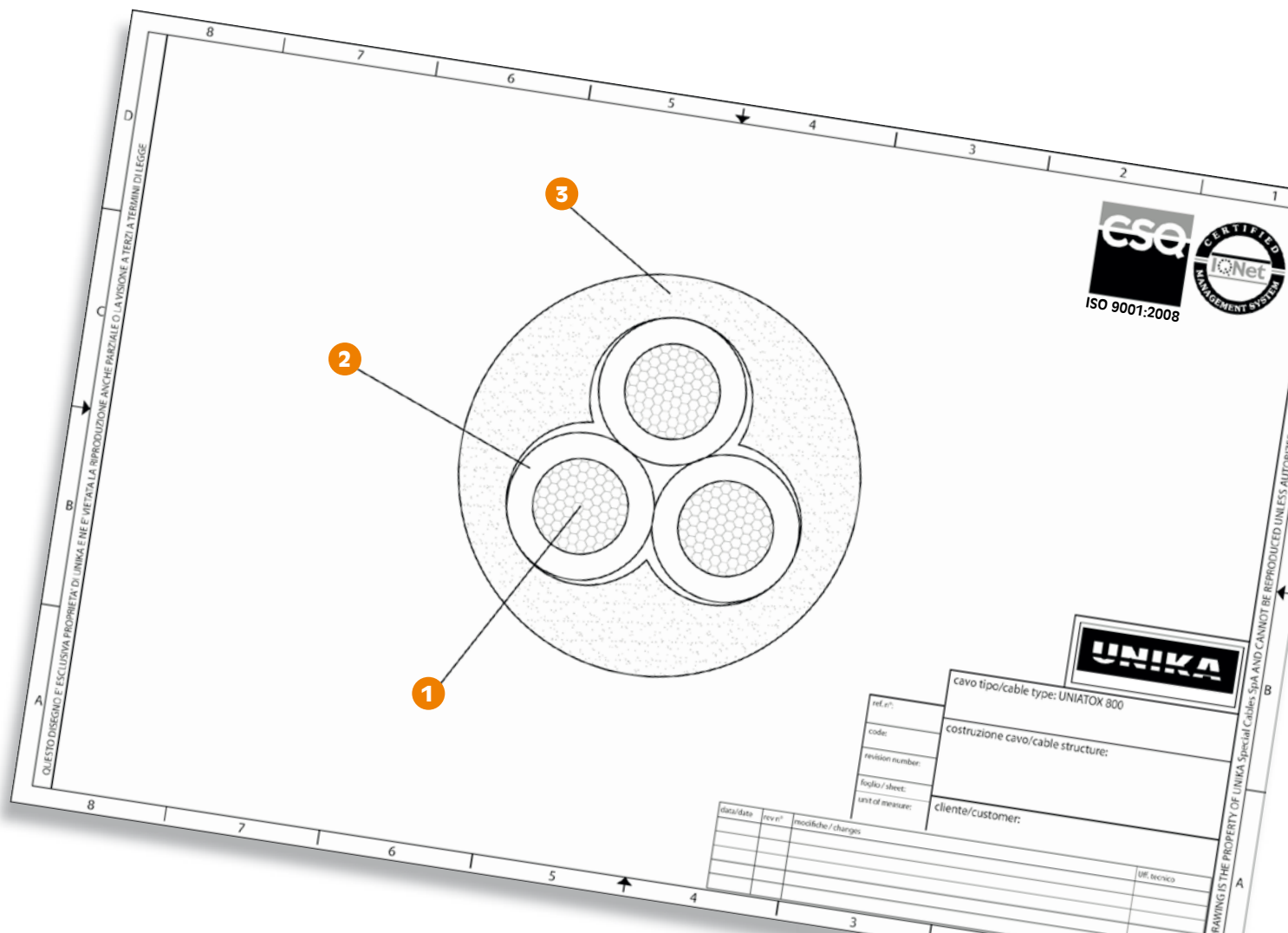
Cavi segnalamento e comando privi di alogeni  
Halogen-free command and signal cables



	Dati tecnici	Technical data
<b>Conduttore</b> <b>Conductor</b>	1 Rame rosso secondo CEI EN 60228 (CEI 20-29) classe 5	Bare copper complying with CEI EN 60228 (CEI 20-29) class 5
<b>Isolamento</b> <b>Insulation</b>	2 Speciale compound privo di alogeni Nero numerato + Giallo/Verde conforme a: VDE 0293, CEI UNEL 00725 Colorato + Giallo/Verde conforme a CEI UNEL 00722	Special halogen-free compound Black, numbered + yellow/Green as per VDE 0293, CCEI UNEL 00725 Colored + Yellow/Green as per HD 308
<b>Guaina</b> <b>Sheath</b>	3 Speciale compound privo di alogeni di qualità M1 conforme a CEI 20-11 colore grigio RAL 7001	Special halogen-free compound M1 quality according to CEI 20-11 grey RAL 7001
<b>Temperatura di lavoro</b> <b>Operating temperature</b>	Posa fissa -30 + 80 °C  Posa flessibile -5 + 70 °C	Fixed application -30 + 80 °C  Flexible application -5 + 70 °C
<b>Tensione lavoro</b> <b>Voltage</b>	U <sub>0</sub> /U 300/500 V conforme a: CEI 20-20, HD 21	U <sub>0</sub> /U 300/500 V as per CEI 20-20, HD 21
<b>Tensione di prova</b> <b>Test voltage</b>	V=2000 V conforme a CEI 20-20	V=2000 V as per CEI 20-20
<b>Raggio minimo di curvatura</b> <b>Minimum bending radius</b>	15 x diametro	15 x diameter
<b>Comportamento al fuoco</b> <b>Fire behaviour</b>	Conforme a: IEC60332-3C	As per IEC60332-3C
<b>Assenza di alogenidrici</b> <b>Non-halogen</b>	Conforme a: CEI 20-37/2-1	As per CEI 20-37/2-1
<b>Indice tossicità</b> <b>Toxicity index</b>	Conforme a: CEI 20-37/4-0	As per CEI 20-37/4-0
<b>Densità fumi</b> <b>Smoke density</b>	Conforme a: CEI 20-37/3-1, IEC 61034-1, IEC 61034-2	As per CEI 20-37/3-1, IEC 61034-1, IEC 61034-2
<b>Acidità fumi</b> <b>Smoke acidity</b>	Conforme a: CEI 20-37/2-2, IEC 60754-2	As per CEI 20-37/2-2, IEC 60754-2

I cavi **UNIATOX 800** sono costituiti da mescole non propaganti l'incendio (IEC 60332-3) prive di alogeni e di sostanze che possano generare gas tossici e corrosivi, diossine o acidi alogenidrici in caso di combustione, e possono quindi essere impiegati in locali dove sono concentrate numerose persone e il rischio di incendio è elevato. La tutela della salute delle persone si unisce alla tutela dell'ambiente, grazie alla possibilità di riciclare i cavi dopo l'utilizzo, e alla possibilità di salvaguardare gli edifici da ingenti danni materiali evitando la formazione di acidi in fase di combustione. Questo cavo halogen-free e antifiamma è utilizzato per la misurazione e il controllo in macchine utensili, nastri trasportatori, linee di montaggio e nell'installazione di impianti e in sistemi di condizionamento. Adatto a installazioni fisse e mobili eseguite senza forzature e con movimenti liberi, il cavo sopporta medie sollecitazioni meccaniche.

The cables **UNIATOX 800** are made of halogen-free compounds (fire retardant IEC 60332-3) and other substances that in case of fire do not release toxic or corrosive gases, dioxins or halogenhydric acids. These cables are therefore suitable for populated areas as well as sites where risk of fire is high. Health protection goes along with environmental protection: these cables can be fully recycled after usage, and since no release of acid substances occurs in case of fire, the risk of severe building damages is considerably reduced. This kind of halogen-free, flame resistant cable is also used for control and measuring purposes in machine tools, roller conveyors, assembly lines, plant installations and ventilation systems. Indicated both for fixed and mobile installations with easy assembly movements, it withstands moderate mechanical stress.



codice code	n° animes x sezione cores x cross section	diametro esterno outer diameter [mm]	massa Cu [Kg/km]	massa cavo cable mass [Kg/km]
13024	2x0,5	4,8	9,0	41,0
13034	3G0,5	5,1	13,0	47,0
13044	4G0,5	5,7	18,0	56,0
13054	5G0,5	6,2	22,0	67,0
13074	7G0,5	7,0	31,0	83,0
13104	10G0,5	8,8	44,0	130,0
13124	12G0,5	9,1	53,0	149,0
13144	14G0,5	9,5	62,0	165,0
13164	16G0,5	10	71,0	184,0
13184	18G0,5	10,7	80,0	209,0
13254	25G0,5	13,0	111,0	288,0
13344	34G0,5	14,8	151,0	380,0
13374	37G0,5	14,8	164,0	391,0
13025	2x0,75	5,2	13,0	49,0
13035	3G0,75	5,5	20,0	58,0
13045	4G0,75	6,2	27,0	72,0
13055	5G0,75	6,8	33,0	85,0
13075	7G0,75	8,1	47,0	106,0
13105	10G0,75	9,6	67,0	164,0
13125	12G0,75	9,9	80,0	183,0
13145	14G0,75	10,6	93,0	207,0
13165	16G0,75	11,2	107,0	232,0
13185	18G0,75	11,9	120,0	257,0
13255	25G0,75	14,2	167,0	373,0
13345	34G0,75	16,1	227,0	489,0
13375	37G0,75	16,1	247,0	506,0
13026	2x1,0	5,5	18,0	58,0

codice code	n° animes x sezione cores x cross section	diametro esterno outer diameter [mm]	massa Cu [Kg/km]	massa cavo cable mass [Kg/km]
13036	3G1,0	6,0	27,0	69,0
13046	4G1,0	6,6	36,0	87,0
13056	5G1,0	7,2	44,0	103,0
13076	7G1,0	8,2	62,0	133,0
13106	10G1,0	10,4	89,0	199,0
13126	12G1,0	10,7	107,0	229,0
13146	14G1,0	11,2	124,0	253,0
13166	16G1,0	12	142,0	290,0
13186	18G1,0	12,7	160,0	333,0
13256	25G1,0	15,6	222,0	263,0
13346	34G1,0	17,4	302,0	619,0
13376	37G1,0	17,4	329,0	642,0
13027	2x1,5	6,3	27,0	87,0
13037	3G1,5	6,7	40,0	103,0
13047	4G1,5	7,3	53,0	123,0
13057	5G1,5	8,2	67,0	145,0
13077	7G1,5	9,8	93,0	192,0
13107	10G1,5	11,7	133,0	306,0
13127	12G1,5	12,1	160,0	338,0
13147	14G1,5	13,4	187,0	386,0
13167	16G1,5	13,6	213,0	453,0
13187	18G1,5	14,5	240,0	494,0
13257	25G1,5	17,8	333,0	699,0
13347	34G1,5	19,8	453,0	938,0
13377	37G1,5	19,8	493,0	970,0
13029	2x2,5	7,6	44,0	129,0
13039	3G2,5	8,3	67,0	14,9

codice code	n° animes x sezione cores x cross section	diametro esterno outer diameter [mm]	massa Cu [Kg/km]	massa cavo cable mass [Kg/km]
13049	4G2,5	9,1	89,0	194,0
13059	5G2,5	10,2	111,0	235,0
13079	7G2,5	11,7	156,0	315,0
13109	10G2,5	14,8	222,0	496,0
13129	12G2,5	15,2	267,0	534,0
13149	14G2,5	16,2	311,0	629,0
13169	16G2,5	17,2	356,0	720,0
13189	18G2,5	18,3	400,0	801,0
13259	25G2,5	22	556,0	1111,0
13349	34G2,5	25,1	756,0	1507,0
13379	37G2,5	25,1	822,0	1557,0
1303A	3G4,0	10	107,0	225,0
1304A	4G4,0	10,9	142,0	285,0
1305A	5G4,0	12,2	178,0	343,0
1307A	7G4,0	13,5	249,0	457,0
1303B	3G6,0	12,4	160,0	309,0
1304B	4G6,0	13,8	213,0	393,0
1305B	5G6,0	15,7	267,0	442,0
1304D	4G10,0	18	356,0	727,0
1304E	4G16,0	21,4	569,0	1053,0
1304F	4G25,0	25	889,0	1570,0
1304G	4G35,0	30,2	1245,0	2031,0
1304H	4G50,0	34,7	1778,0	2857,0